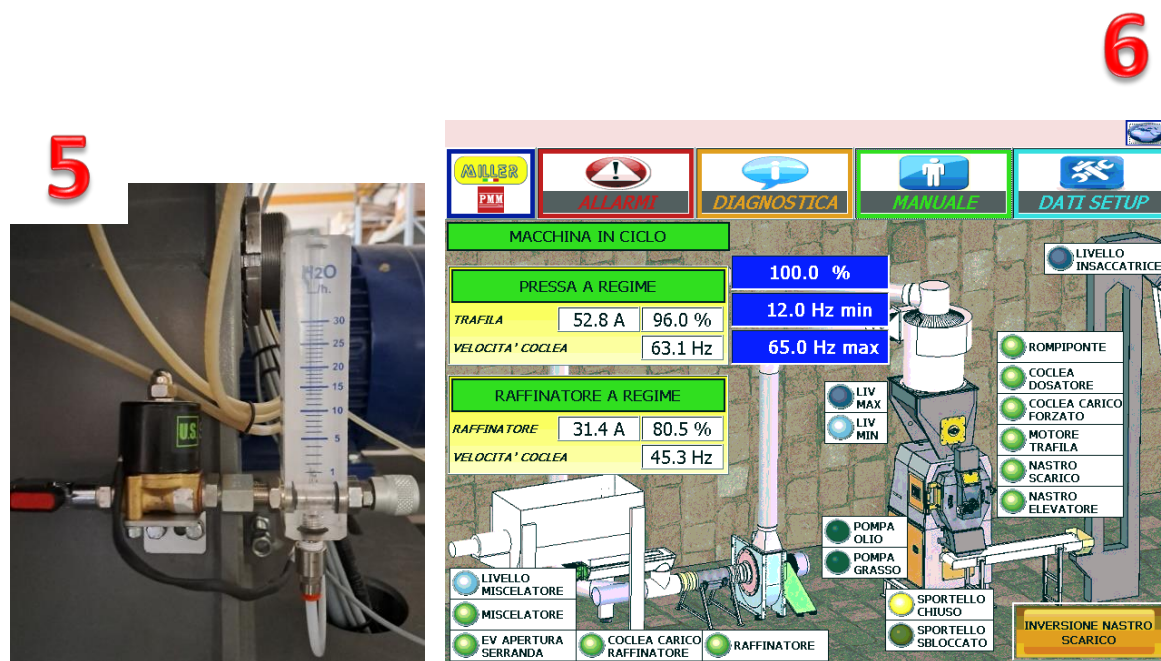
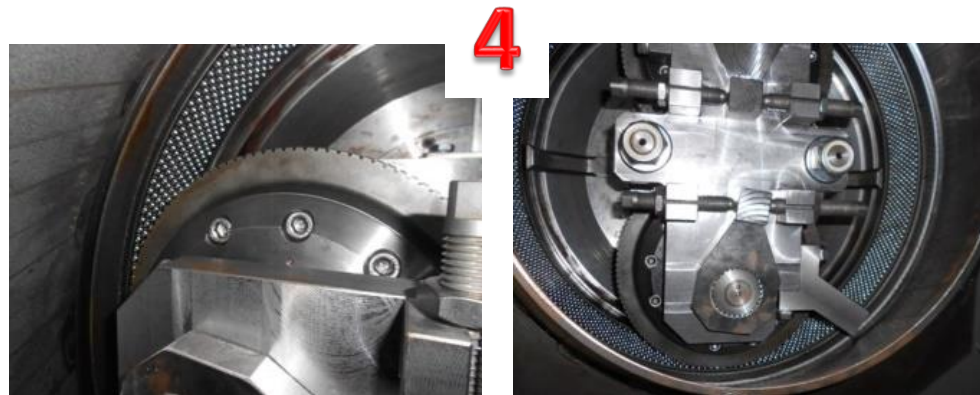


PELLET PRESS CUS-100 / 132-160-200 KW

Hourly production: 1800-2200 kg/h

- 1- STORAGE HOPPER
- 2- GREASING SYSTEM WITH CLOSE CIRCUIT
- 3- OILING SYSTEM FOR DIE
- 4- DIE AND COMPRESSION ROLLERS
- 5- KIT WATER ADJUSTMENT
- 6- ELECTRICAL PANEL, PLC



* the images are indicative and not binding, the production data may vary according to the characteristics of the incoming wood.